

Safeguarding and Child Protection Policy
For use during the COVID-19 outbreak
St Patrick's Catholic Primary School

January 2021



Principal: Mark McLoughlin

Designated Safeguarding Lead: Mark McLoughlin (Principal)

Deputy Designated Safeguarding Lead: Danielle Kingham (Vice Principal)

Deputy Designated Safeguarding Lead: Lesley Burton (Senior Class Teacher)

Deputy Designated Safeguarding Lead: Jenny Doherty (Learning Mentor)

Named Governor for Safeguarding: Alex Hindmarsh

Chair of Governors: Alex Hindmarsh chair.sp@romeromac.com

Vice Chair of Governors: John Teahan j.teahan@romeromac.com

Vice Chair of Governors: Eleanor Barry e.barry@romeromac.com

Local Authority designated officer: Mark Goddard

Telephone number: **02476 978499**

Designated Lead for Looked After and Previously Looked-After Children:

Mark McLoughlin (Principal)

Policy Addendum reviewed remotely and agreed by governors on:

January 2021

Contents

1 Introduction	3
2 Context.....	4
3 Local Safeguarding Arrangements	5
4 Roles and Responsibilities	6
5 Responding to signs of abuse.....	7
6 Peer on Peer Abuse	8
7 Online Safety.....	9
8 Record-keeping	10
9 Attendance.....	10
10 Children attending Alternative Provision.....	11
11 Children from other schools	11
12 Safer Recruitment	12
13 Allegations of abuse against staff	12
14 Policy Review.....	13
Appendix A – Process for reporting safeguarding and child protection concerns.....	14
Appendix B – Online Safety Resources	15
Appendix C – Mental Health Support for Children and Families	15

1 Introduction

1.1. This policy is an addendum to the school's main Safeguarding and Child Protection Policy and is intended for use during the COVID-19 emergency period only.

1.2 We continue to recognise that safeguarding and child protection is an essential part of our duty of care to all students and that we have a responsibility to safeguard children, whether they are on-site or staying at home. We understand that safeguarding, child protection and promoting the welfare of all children is everyone's responsibility and everyone has a role to play in protecting children. We continue to promote a culture of vigilance, where staff and volunteers act immediately if they have safeguarding concerns about a child. We recognise that our school is part of a wider safeguarding system for children and work closely with other agencies to promote the welfare of children. We maintain an attitude of 'it could happen here' and will consider the wishes of, and at all times, what is in the best interests of each child.

1.3 Due to the nature of the emergency we are facing and the changing threat from COVID-19, this policy is regularly reviewed and updated to ensure that the school is compliant with;

- All relevant legislation and statutory guidance;
- government guidance relating to the COVID-19 outbreak; and
- guidance from the Coventry Safeguarding Children's Partnership (the Local Authority, the local clinical commissioning group and the chief office of police).

1.3 All staff will be made aware of this policy and updated regularly on further developments.

1.4 Further information about the government's approach to COVID-19 can be found here: <https://www.gov.uk/coronavirus>

1.5 The purpose of this policy is to;

- Promote safeguarding and child protection and demonstrate the school's commitment to keeping children safe whilst operating under emergency measures related to COVID-19;
- Provide all members of staff with the information required to meet their safeguarding duty and protect children from harm during this time;
- Provide stakeholders with clear information relating to the school's safeguarding and child protection procedures during the COVID-19 outbreak; and
- Ensure that children are protected from maltreatment or harm.

1.5 **St Patrick's Catholic Primary School** is committed to the following principles at all times;

- All children have the right to be protected from harm;
- The best interests of children will always continue to come first;

- All staff are responsible for keeping children safe and have a responsibility to act if they think a child is at risk of harm;
- If anyone in school has a safeguarding concern about any child they should continue to follow usual procedures and must act and act immediately;
- A Designated Safeguarding Lead or a Deputy Safeguarding Lead should be available; and
- Working with other agencies (such as Children's Services and the Virtual School) is essential to promote safeguarding and protect children from harm.

1.6 We continue to be subject to a duty under section 26 of the Counter-Terrorism and Security Act 2015 in the exercise of their functions to have “due regard” to the need to prevent people from being drawn into terrorism and will refer to appropriate services if we are concerned a child is being radicalised.

1.7 We continue to fulfil our duties under Section 5B of the FGM Act 2003, as inserted by section 74 of the Serious Crime Act 2015.

1.8 Scope

- This policy applies to all teaching, non-teaching, support, supply, peripatetic, contract staff, governors, volunteers and trustees working in or on behalf of **St Patrick's Catholic Primary School**. All references in this document to 'staff' or 'members of staff' should be interpreted as relating to the aforementioned unless otherwise stated.
- This policy applies to all staff, whether working on-site or at home.

2 Context

2.1 Following government guidance, the school has been closed to pupils from **Tuesday 5th January 2020**, with the exception of children deemed to be 'vulnerable', or those that with parent/s who are 'critical-workers'.

2.2 If the school is completely closed the children may attend another site/hub and provision will be at one of our other schools within the academy.

2.3 The school adheres to government guidance on 'critical workers'. For further information relating to critical workers, see guidance here: <https://www.gov.uk/government/publications/coronavirus-covid-19-maintaining-educational-provision/guidance-for-schools-colleges-and-local-authorities-on-maintaining-educational-provision>

2.4 The school remains open for children who are deemed to be vulnerable, as per government guidance. The school has given careful consideration to which children need to continue to attend school, in order to ensure children are safe and to minimise the spread of COVID-19.

2.5 Each child has been considered on a case-by-case basis and an assessment of risk has been made, with relevant external agencies, parents and the Local Authority, to decide if a child should be on site or not. The school considers children to be vulnerable and may need to attend if they are;

- Children on Child Protection Plans; Children in Need; Looked-After or Previously Looked-After; and
- Children with SEND (with or without an EHCP), who would be safer at school than at home.

2.6 Children other than those above may be considered vulnerable and some children will become vulnerable during the time that the school is closed. The school will continually review which children will attend school, in line with local and governmental guidance.

2.7 Additional support may be put in place to safeguard;

- Children vulnerable to CE/Contextual safeguarding issues and those in receipt of early help; and
- Children who are homeless/living in temporary accommodation, refugees and asylum seekers and young carers.

2.7 There is an expectation that children who have a social worker will continue to attend school, unless they have an underlying health condition that will put them at severe risk.

2.8 Where parents of the children referred to in paragraph 2.7 are concerned about the risk of the child contracting COVID-19, **St Patrick's Catholic Primary School** in partnership with the social worker will talk through these anxieties with the parent/carer following the advice set out by Public Health England.

2.9 The school will follow government guidance to support children who are usually in receipt of free school meals. Further information can be found on this here: <https://www.gov.uk/government/publications/covid-19-free-school-meals-guidance/covid-19-free-school-meals-guidance-for-schools> The school will use a new system called WONDE, where vouchers will be sent to eligible families via this online platform to the value of £15 per pupil.

2.10 Some children will have existing vulnerabilities and will not attend school. In the case of these children, the school will offer these pupils a school place or alternatively, ring the parents of these pupils (depending on need) at least weekly. The Learning Mentor will also do doorstep visits as and when necessary if we have concerns about a child or had little or no contact or engagement in remote learning, or due to their vulnerability.

2.11 All children (regardless of vulnerability) will be contacted at least once a week by their class teacher. All contact will be logged on a class contact sheet and shared on SharePoint with the SLT and Learning Mentor who will monitor this.

3 Local Safeguarding Arrangements

3.1 The school will ensure that it is aware of any changes to local safeguarding arrangements through existing channels of communication with the Local Authority and the wider Coventry Safeguarding Children Partnership.

3.2 The school continues to operate under Coventry Safeguarding Partnership policies and continues to use the ['Right Help Right Time'](#) guidance when considering if children require additional support or statutory intervention.

3.3 This policy will be regularly reviewed and updated to reflect any changes in local safeguarding arrangements.

4 Roles and Responsibilities

4.1 The Governing Body and/or Proprietors

4.1.1 The governing body continues to monitor the school during this period of emergency closure. Governors will continue to have oversight of leadership in the school. Governor meetings will be carried out each half term on TEAMS. LAC chairs have a week keeping in touch conversation with the Principal and a fortnightly check in with the CSEL and all LAC chairs from across the Academy.

4.2 The Role of the Headteacher

4.2.1 The headteacher will;

- Ensure that this policy is regularly updated in line with evolving government and local guidance relating to COVID-19;
- Ensure that this policy and associated procedures are adhered to by all staff;
- Ensure that all adults coming into contact with children at school have been subject to the appropriate safer recruitment checks;
- Respond to allegations of abuse against all other members of staff; and
- Ensure that staff on-site and off-site have regularly updated training to ensure that they are aware of local safeguarding arrangements.

4.2.2 In the event that the headteacher is unavailable either on-site or remotely, the above responsibilities will be completed by Danielle Kingham, Vice Principal

4.3 The Role of the Designated Safeguarding Lead (DSL)

4.3.1 The role of the DSL is outlined in the main school Safeguarding and Child Protection Policy and in [Keeping Children Safe in Education \(2020\)](#).

4.3.2 In addition to their usual duties, the DSL will also have regard to the additional mental health issues that pupils on-site may be experiencing as a result of COVID-19 and provide/arrange support for pupils as necessary.

4.3.3 Wherever possible, a trained DSL (or deputy DSL) will be available on site. Where this is not possible due to staff self-isolation, a trained DSL (or deputy DSL) will be available to be contacted via phone or online video.

4.3.4 In the event that the DSL and the DSL/s are unable to work remotely due to illness, an appropriate senior leader will take responsibility for co-ordinating safeguarding on site. This could include, but is not limited to, updating and managing access to safeguarding and child protection files

and as required liaising with children's social workers where they require access to children in need and/or to carry out statutory assessments at **St Patrick's Catholic Primary School**. Information will be passed to the DSL as soon as practicably possible.

4.3.5 Arrangements for contacting the DSL/DDSs will be shared with staff before 9am each day, as well as any relevant safeguarding and child protection updates and training.

4.3.6 The government has acknowledged that DSL refresher training is very unlikely to take place during this emergency. All DSLs and DDSs that have previously been trained will continue to be classed as DSLs even if they miss their refresher training, in line with current government guidance. All DSLs and DDSs will keep up to date with the latest safeguarding information and guidance through via e-bulletins, Local Authority e-bulletins and taking time to read and digest safeguarding developments.

4.4 The Role & Responsibilities of all Staff within School

4.4.1 All staff, whether on-site or working from home, will;

- continue to operate under the principles of the main school Safeguarding and Child Protection Policy, the staff Code of Conduct, all relevant legislation and statutory guidance and continue to have particular regard to [Keeping Children Safe in Education \(2020\)](#);
- will continue to promote a culture of vigilance and refer all safeguarding concerns to the appropriate person immediately;
- adhere to all government, local and school advice relating to hygiene, response to COVID-19 symptoms and self-isolation;
- seek advice from the Designated Safeguarding Lead if they are unsure; and
- All teachers should safeguard children's wellbeing and maintain public trust in the teaching profession as part of their professional duties (Teaching Standards, 2012).

5 Responding to signs of abuse

5.1 Information relating to types of abuse and signs and symptoms of abuse can be found in **St Patrick's Catholic Primary School's** main safeguarding and child protection policy and [Working Together to Safeguard Children \(2018\)](#).

5.2 All staff and volunteers will continue to be alert to indicators of abuse and will report any concerns to the appropriate member of staff immediately.

5.3 If a member of staff, parent/carer or member of the public is concerned about a child's welfare (whether they are attending school or not), they should report it to the designated safeguarding lead as soon as possible. If the designated safeguarding lead is not available, it should be reported to the deputy safeguarding lead without delay. Although any member of staff can make a referral to Children's Social Care, where possible there should be a conversation with the Designated Safeguarding Lead via telephone or online video call, if they are working from home. If there is no

DSL available, concerns should be reported to any member of the SLT, who will then contact the principal or CSEL if Principal unavailable.

5.4 Most children are not currently attending school. The school recognise that children who are not attending school may need to make a disclosure or want to seek help from a trusted member of staff. The school will ensure weekly contact is made with each child on their learning platform. Also, all KS2 pupils have an email address and will be able to make contact with their class teacher.

5.5 If anyone other than the Designated Safeguarding Lead makes a referral to children's social care or to the police, they should inform the DSL as soon as possible.

5.6 If the school is concerned that a child is at risk of significant harm, we will seek advice from Coventry's Multi-Agency Safeguarding Hub (MASH) and make a referral to this service if necessary. Coventry's MASH continues to be fully functional in terms of its safeguarding responsibilities.

5.7 Referrals to the Multi-Agency Safeguarding Hub can and should still be made for children at risk of harm using the online Multi-Agency Referral Form (MARF).

MASH Telephone number: 02476 788 555

MASH online referral form: <http://www.coventry.gov.uk/safeguardingchildren>

Out of hours Emergency Duty Team: 02476 832 222

Prevent/Channel Referrals: Refer to MASH (mash@coventry.gov.uk) and to CTU_GATEWAY@west-midlands.pnn.police.uk

5.8 The school will continue to receive Operation Encompass reports as long as the police have capacity to offer this service. The school will risk assess each report on a case-by-case basis and continue to operate as usual in response to reports, unless instructed otherwise by the police or Local Authority. This information will be recorded on the child's safeguarding and child protection record as usual. If a child is attending a partner school or hub, this information will be passed to the DSL at the host school. This is constantly under review and the school is being regularly updated on any changes by the local Operation Encompass Co-ordinator.

5.9 All services are under increased pressure during this period of emergency. However, the school recognises that safeguarding continues to be of paramount importance and will work with other agencies in order to ensure children are safe. If a child's situation does not appear to be improving following a referral, the school may re-refer the child. We will also consider using the [Coventry Safeguarding Children Partnership's Escalation and Resolution of Professional Disagreements policy](#) to ensure that our concerns have been addressed and that the situation improves for the child.

6 Peer on Peer Abuse

6.1 **St Patrick's Catholic Primary School** understands that both adults and other children can perpetrate abuse, and peer on peer abuse is taken very seriously. Peer on peer abuse can include bullying, cyber-bullying, physical abuse, sexting, sexual violence and/or harassment, upskirting, and initiation/hazing ceremonies. The school recognise that safeguarding issues can manifest as peer-on-peer abuse.

6.2 During this time, staff will continue to be vigilant in reporting any concerns relating to peer on peer abuse to the DSL.

6.3 Pupils in school are working together in 2-year group bubbles: Yrs1/2,3/4, 5/6. Staff briefing will remind staff to be aware of the risk of peer-on-peer abuse.

6.4 The school's revised approach to peer-on-peer abuse is informed by the principles set out in Part 5 of Keeping Children Safe in Education (2019).

7 Online Safety

7.1 The school recognises that children both on-site and off-site are vulnerable to abuse and radicalisation online. Children who are at home may be spending more time online and this increases their vulnerability.

7.2 **St Patrick's Catholic Primary School** recognises that additional safeguarding arrangements are required to ensure that children are safe online at this time.

7.3 Governors will review arrangements to ensure that they continue to be appropriate.

7.4 Online activity in school will continued to be monitored through our usual IT monitoring systems. Any misuse alerts go directly to the Principal and Learning Mentor who will monitor these through our system called SENSO. Access to ipads and laptops within the school are monitoring and communicated to the Principal and Learning Mentor. An alert flow chart has been produced to direct the actions according to severity.

7.5 Children who are not attending school- St Patrick's has prepared these children and parents for staying safe online through lessons within school and also monthly e-safety newsletters that are sent out to all parents.

7.6 St Patrick's is using technology to deliver learning to pupils who are at home. In order to ensure that children are safe when learning online, the school have;

- Platforms for online learning are accessed through secure login username and passwords.
- Trained staff involved on appropriate use of IT, provided pupils with information sheets, acceptable use agreements etc.
- Parents have been advised on suitable websites for children and the risks of using online unknown tutors etc.

7.7 We have reviewed the staff Code of Conduct and information sharing policy to reflect the current change in circumstances and increased use of technology.

7.8 Staff have received training on the new and updated Code of Conduct, either on-site or remotely

7.9 A list of useful sources of information relating to online safety is including in Appendix B of this policy.

8 Record-keeping

8.1 A written record of all safeguarding and/or child protection concerns, discussions and decisions made will continue to be kept in individual children's files. This will be separate from the main school file and will only be accessed by the relevant safeguarding staff.

8.2 **St Patrick's Catholic Primary School** keeps all safeguarding files electronically, using a system called CPOMs. All teaching staff have access to record incidents on CPOMS.

8.3 Arrangements for information-sharing if children are attending at a different school/hub are as follows.

1. Hub Leadership will identify a named HDSL who will oversee the DSL duties for the pupils attending the Hub.
 2. The HDSL will keep an updated contact list to include contact details of all the DSLs from the settings feeding into the Hub, along with deputy DSL's and Headteacher details.
 3. The HDSL will have access to the names and contact details for all the pupils attending the Hub.
 4. The HDSL holds responsibility to report safeguarding concerns to the relevant school DSL/Deputy DSL or Headteacher to allow for the normal school reporting/recording procedures to be followed. The HDSL can also contact relevant agencies directly in response to concerns.
 5. The HDSL can report concerns straight into the MASH team, however contact with the school DSL prior to this should be attempted in the first instance where possible.
- *Inline with escalation procedures, any staff member still has the right to contact social care/children services should they feel the need. The Hub school will also identify a back up DSL who is on standby should the HDSL be unable to attend due to illness or self-isolation.

9 Attendance

9.1 The school adheres to [all](#) government guidance, which states that parents should keep their children at home, wherever possible, and that schools, colleges and early years settings should remain open only for children of critical workers and those deemed to be vulnerable, as outlined in Section 2 of this policy. [The schools also adhere to government guidance regarding class sizes when learning on-site.](#)

9.2 As such, **St Patrick's Catholic Primary School** will not be following our usual attendance procedures and non-attendance will not be managed in the way that it normally would and children should not attend unless there is an agreement with the school.

9.3 The school will work with families and social workers to agree whether children should attend school or not. If it is agreed that a child should attend and they do not, the school will follow this up with parents/carers.

9.4 The school will follow up with any parent or carer who has arranged care for their children and the children subsequently do not attend.

9.5 If children who should be attending school develop symptoms, they will be asked to remain at home. In the event that this happens, we will make regular visits on a weekly or twice weekly basis according to level of need.

9.6 The school will take the opportunity when communicating with parents and carers to confirm emergency contact numbers are correct and ask for any additional emergency contact numbers where they are available.

9.7 In all circumstances where a vulnerable child does not take up their place at the school, or discontinues, we will notify their social worker.

9.8 Some children may have existing vulnerabilities but will not attend school (those with underlying health conditions, for example). In this case, the school will make once or twice weekly visits according to level of need as well as weekly phone calls.

9.9 The school will continue to record pupil daily attendance using the Arbor system already in place. Code X will be used for noneligible children. As vulnerable children are still expected to attend school full time, they will not be marked Code X if absent.

9.10 In cases whereby individuals who are self-isolating but are also considered vulnerable, schools will keep in contact with these children until they are able to return to school site.

9.11 Schools will also work closely with parents to ensure their child is engaging well with their remote education.

10 Children attending Alternative Provision

10.1 St Patrick's does have pupil(s) attending alternative provision. The arrangements are that there are weekly updates from the alternative provision to school. St Patricks has shared a copy of all safeguarding documentation and relevant information regarding the individual circumstances of the pupil(s) and received a copy of the safeguarding policy from the alternative provision setting.

11 Children from other schools

11.1 If children move to **St Patrick's Catholic Primary School** from another setting, we will request SEND and safeguarding and child protection information for that child, the risk assessment determining if the child should be in attendance or not and details of support in place. This includes, but is not limited to, Education and Health Care Plans (EHCPs), Child in Need plans, Child Protection plans, Personal Education Plans and details of professionals involved with the child.

11.2 For looked-after children, the change in school will be led and managed by the Virtual School Head with responsibility for the child (see front of policy for details).

11.3 This information will be requested and should be sent to the school prior to the child's arrival by the Designated Safeguarding Lead, the SENCO or an appropriate senior manager in their absence.

11.4 We will liaise closely with the Local Authority, the Virtual School and social workers in the event that a child moving to the school has either an Education Health Care Plan and/or is a Looked After Child.

11.5 We will use CPOMS to share safeguarding information for children from other schools. The Pastoral team will call/email; to ensure we have the correct information. An email will be sent with the information; the files will be password protected; a separate email will be sent with the password.

11.6 We continue to operate under the Data Protection Act (2018) and the General Data Protection Regulation (GDPR). However, this is not to be a barrier to sharing information for the purposes of keeping children safe.

12 Safer Recruitment

12.1 **St Patrick's Catholic Primary School** is committed to providing children with a safe environment. We take safer recruitment very seriously and all staff and volunteers are subject to the necessary checks.

12.2 There are no circumstances in which a child or children will be unsupervised with an adult who has not been subject to all necessary safer recruitment checks. Any new members of staff, new volunteers or existing volunteers taking on new roles will be subject to all necessary safer recruitment check and this will be recorded on the Single Central Record.

12.3 Our safer recruitment practices strictly adhere to Keeping Children Safe in Education (2019).

12.4 We do not have a condensed site and remain open.

12.5 If a member of staff or volunteer with a DBS check from a childcare setting, another school or another college temporarily moves to **St Patrick's Catholic Primary School**, a risk assessment will be completed to ascertain if a new DBS check is required before they work in regulated activity. The school will follow guidance set out in [Coronavirus \(COVID-19\): safeguarding in schools, colleges and other providers \(27th March 2020\)](#).

12.6 Any members of staff or volunteers transferring from another childcare or education setting will undergo induction training and we will seek evidence from their main setting that the member of staff has completed relevant safeguarding training in line with other similar staff or volunteers and they have read Part I and Annex A of Keeping Children Safe in Education.

13 Allegations of abuse against staff

13.1 **St Patrick's Catholic Primary School** takes all allegations against staff seriously and will manage them in line with this policy, Part Four of Keeping Children Safe in Education (**September 2019**) and the **CSCP Guidance, 'Allegations against Staff and Persons in a Position of Trust'**.

13.2 If a concern or allegation of abuse arises against the Headteacher, it must be reported to the Chair of Local Academy Committee without delay.

13.3 If a concern or allegation of abuse arises against any member of staff other than the Principal, it must be reported to the Principal without delay. In the event that the Principal is unavailable due to illness or other circumstance, concern must be reported to Danielle Kingham, Vice Principal.

13.4 Allegations of abuse against staff should be not discussed directly with the person involved.

13.5 The Headteacher or Chair of Governors should consider if the allegation meets the threshold for Local Designated Officer (LADO) intervention. The LADO is operating as usual and referrals must be made through the online referral form here: https://www.coventry.gov.uk/info/206/coventry_safeguarding_children_partnership/2628/local_authority_designated_officer_lado

13.6 Concerns relating to a position of trust issue will be referred to the Local Authority designated officer within 24 hours.

13.7 If a child has suffered, or it is suspected that they have suffered, abuse or harm, a MASH referral will also be made.

13.8 In the instances where an allegation is dealt with internally, the Local Authority designated officer will provide information and support to **St Patrick's Catholic Primary School** in managing the allegation. This service will still be provided throughout this period of emergency.

13.9 The procedure for whistleblowing is outlined in the school's main Safeguarding and Child Protection Policy.

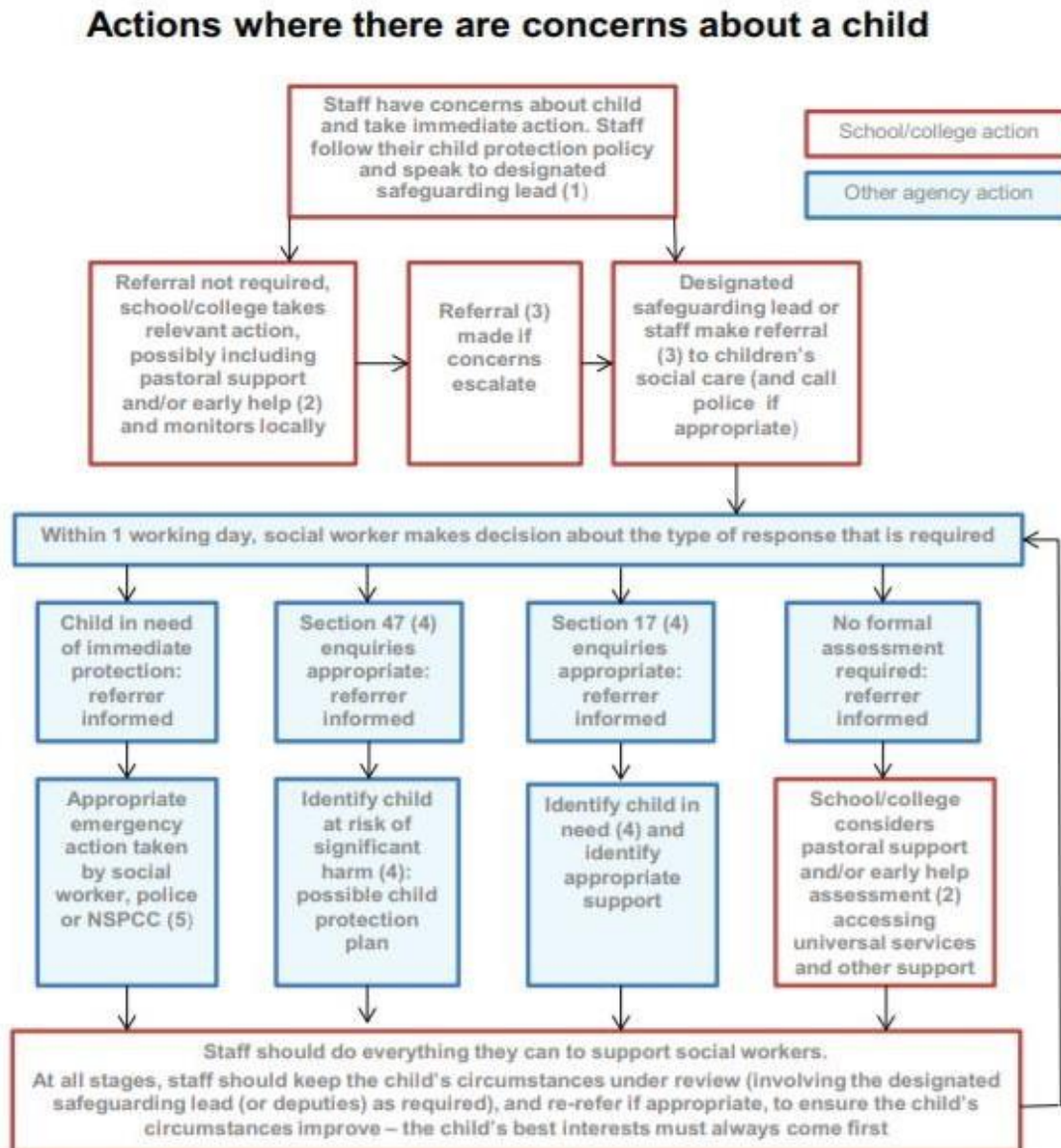
14 Policy Review

14.1 This policy is a dynamic document and will be updated regularly as further government and local guidance is published.

Appendix A – Process for reporting safeguarding and child protection concerns

Insert a flowchart/table/clear explanation of your school's specific procedures for staff, volunteers, parents, children etc to report concerns during this time. Include rota information for DSLs, useful phone numbers etc.

Include what people should do if they have a concern about a young person who is not attending school.



(1) In cases which also involve a concern or an allegation of abuse against a staff member, see Part four of this guidance.
 (2) Early help means providing support as soon as a problem emerges at any point in a child's life. Where a child would benefit from co-ordinated early help, an early help inter-agency assessment should be arranged. Chapter one of [Working Together to Safeguard Children](#) provides detailed guidance on the early help process.
 (3) Referrals should follow the process set out in the local threshold document and local protocol for assessment. Chapter one of [Working Together to Safeguard Children](#).
 (4) Under the Children Act 1989, local authorities are required to provide services for children in need for the purposes of safeguarding and promoting their welfare. Children in need may be assessed under section 17 of the Children Act 1989. Under section 47 of the Children Act 1989, where a local authority has reasonable cause to suspect that a child is suffering or likely to suffer significant harm, it has a duty to make enquiries to decide whether to take action to safeguard or promote the child's welfare. Full details are in Chapter one of [Working Together to Safeguard Children](#).
 (5) This could include applying for an Emergency Protection Order (EPO).

Appendix B – Online Safety Resources

Support for schools implementing remote learning

- <https://swgfl.org.uk/resources/safe-remote-learning/>

Support for professionals when using videos and/or live streaming

- <https://static.lgfl.net/LgflNet/downloads/digisafe/Safe-Lessons-by-Video-and-Livestream.pdf>

Support for children and parents

- Childline – www.childline.org.uk
- UK Safer Internet Centre to report and remove harmful online content – www.reportharmfulcontent.com
- CEOP (to make a report about online abuse) – www.ceop.police.uk/safety-centre
- Internet Matters (for support for parents and carers to keep their children safe online – www.internetmatters.org
- London Grid for Learning (for support for parents and carers to keep their children safe online) – www.lgfl.net/online-safety/
- Net-aware (support for parents and carers from the NSPCC) – www.net-aware.org.uk
- Parent info (for support for parents and carers to keep their children safe online) – www.parentinfo.org
- Thinkuknow (advice from the National Crime Agency to stay safe online) – www.thinkyouknow.co.uk
- UK Safer Internet Centre (advice for parents and carers) – <https://www.saferinternet.org.uk/advice-centre/parents-and-carers>

Appendix C – Mental Health Support for Children and Families

The Government has produced a guidance document with suggestions for managing mental health and wellbeing during this time. Information can be found here:

<https://www.gov.uk/government/publications/covid-19-guidance-for-the-public-on-mental-health-and-wellbeing/guidance-for-the-public-on-the-mental-health-and-wellbeing-aspects-of-coronavirus-covid-19#where-to-get-further-support>

Add useful websites or sources of information that are relevant to your setting here using this document – links are within the information on the webpage above.

